

Growth and utilization of Shodhganga

Ellora Barman.

PhD research scholar

Dr S . Ravikumar

Associate professor

Bidyut. B . Borah.

PhD research Scholar

North Eastern Hill University (NEHU), Shillong, Meghalaya.

What is ETD ?

It's a digital version of a thesis or dissertation (ETD).
Submitted and stored electronically rather than in print.



Shodhganga



- It is a digital repository of theses and dissertations submitted to universities in India.
- Launched 2009, managed by INFLIBNET.
- It provides platform for students to deposit their Ph.D. theses and make them available to the entire scholarly community in open access.

Objective



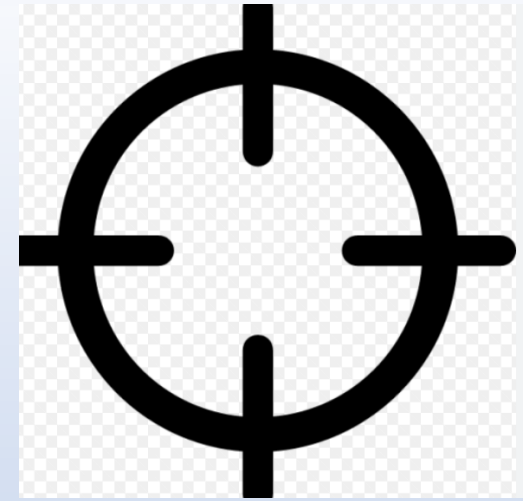
- To know the shodhganga uses pattern since its inception .
- To know what are the regions involved worldwide and within India
- To know yearly update of theses and dissertations .
- Text analysis of the titles to understand the growth of topics , topic modelling of the documents ,publication proportion of the topics .

Significance -

- Academic advancement and collaboration
- Global reach and impact
- Digital transformation research
- Efficient information retrieval
- Plagiarism detection through shodhsudhi
- Contribution to academic literature
- Future research and development .

Scope

- Usage pattern analysis
- Global and regional engagement
- Yearly update trends
- Text analysis and topic modelling
- Implication for research and education
- Technological advancement
- Future research avenue
- Policy implications

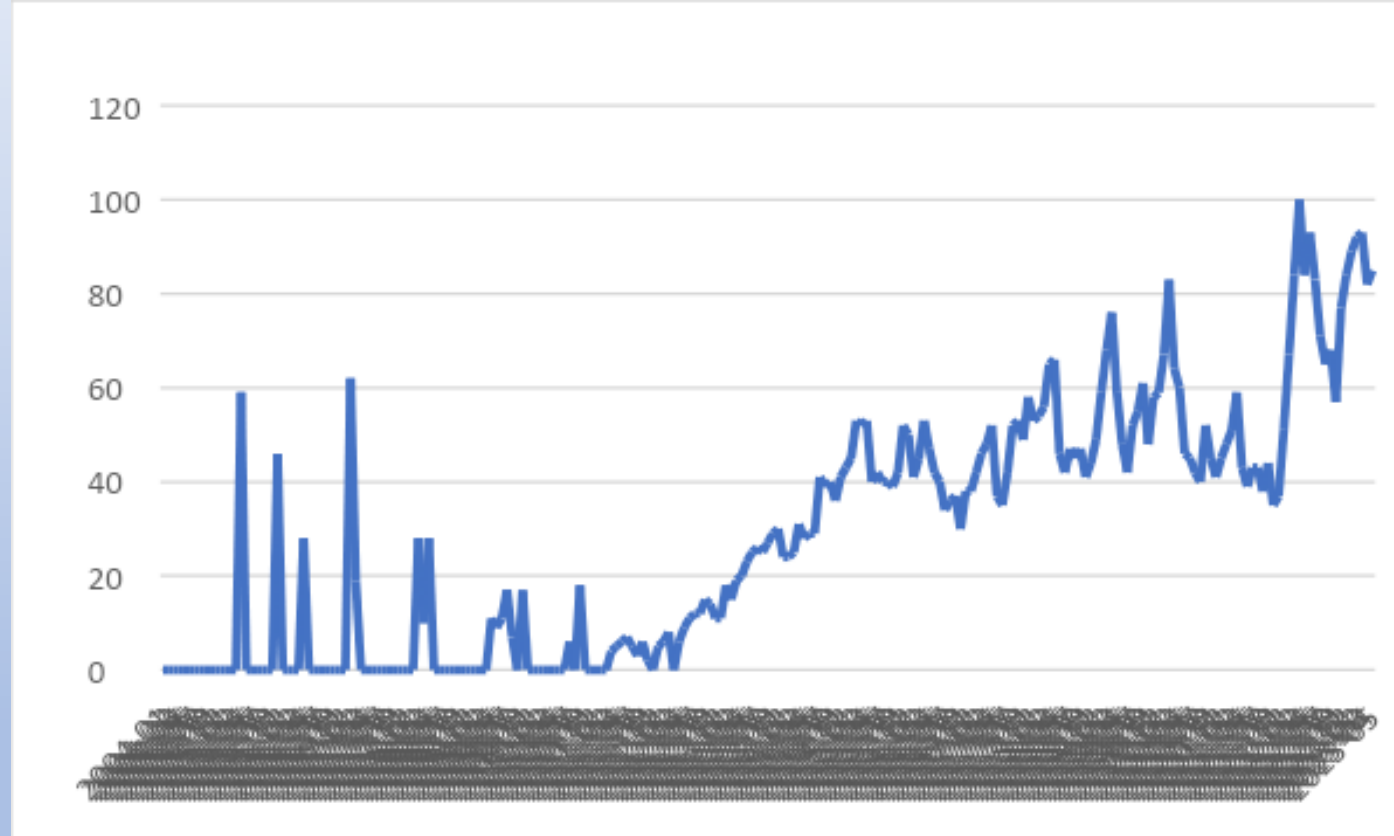


Methodology



- Google trends for shodhganga uses patterns , local and global use and related topic and queries.
- For text analysis LDA method of text mining is used.

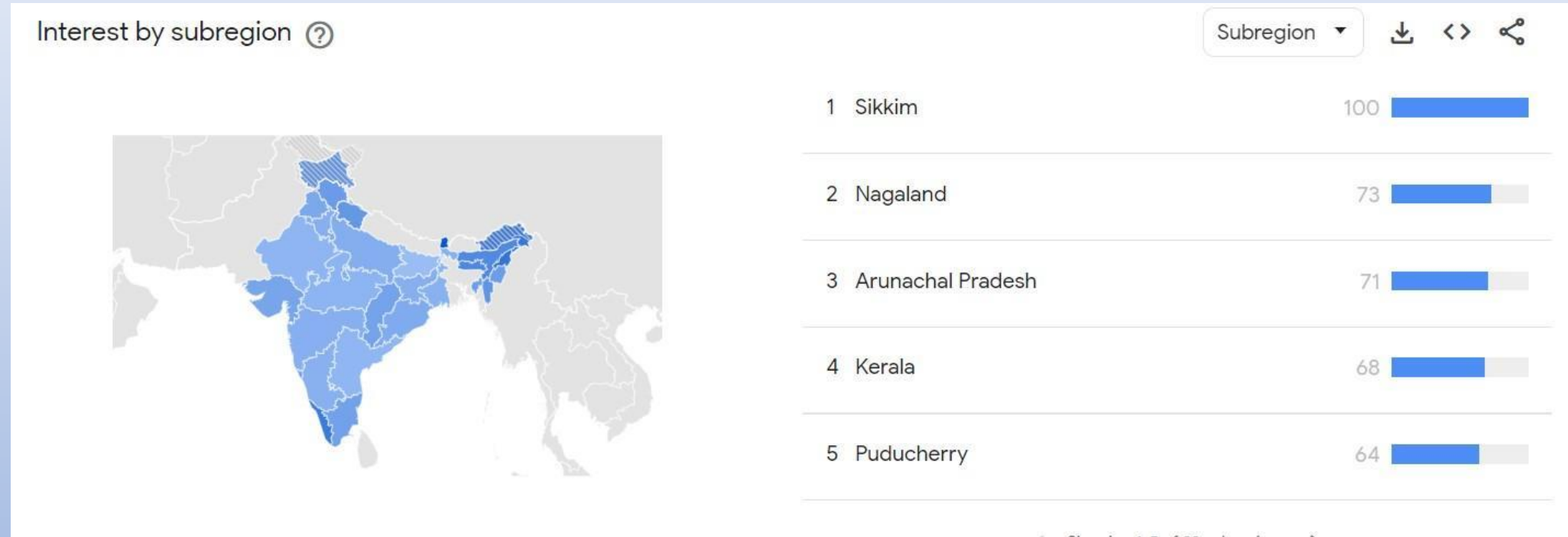
To know shodhganga uses uses pattern since its inception



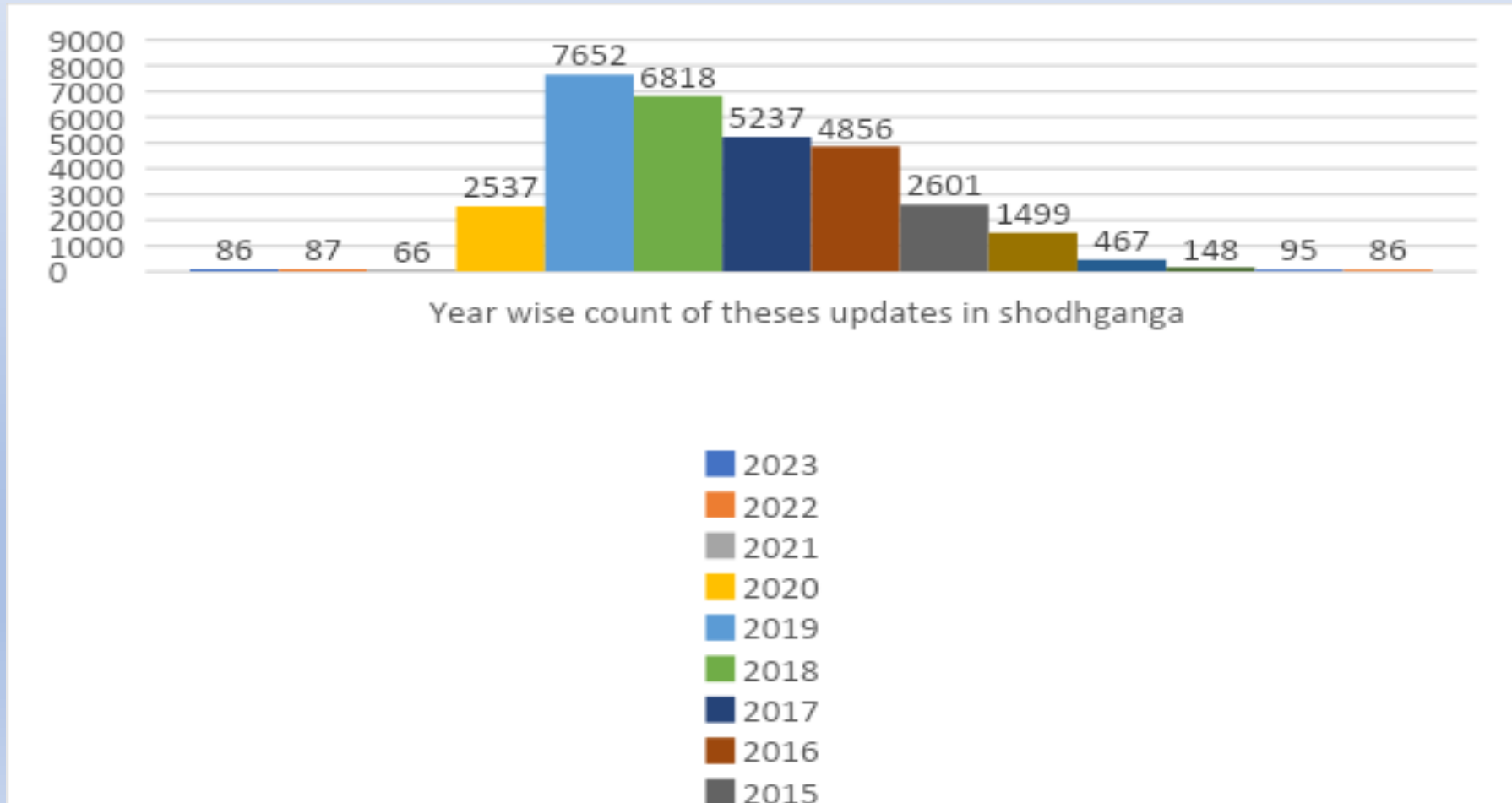
To know what are the regions involved worldwide and within India



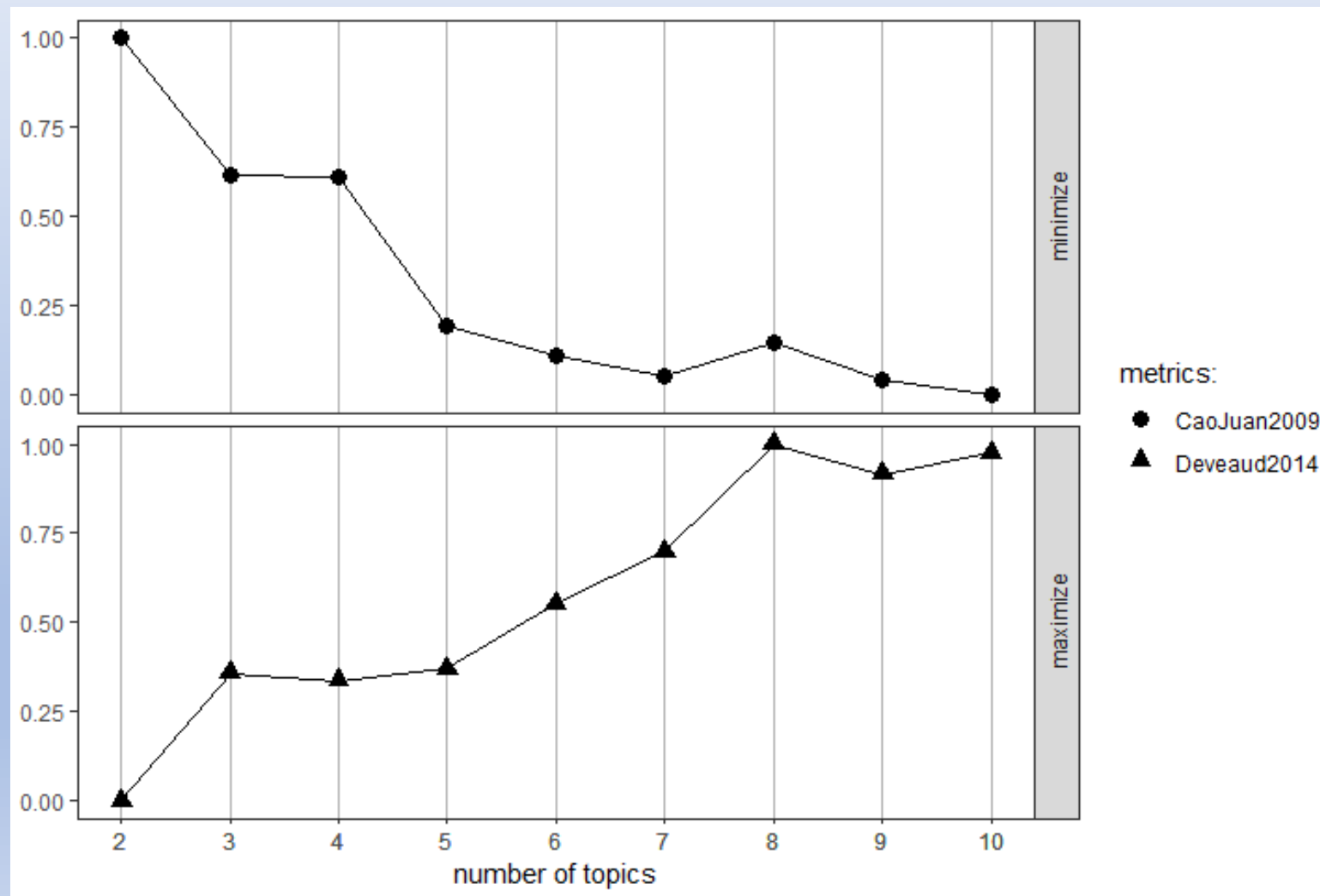
Regional interest



To know yearly update of theses and dissertations



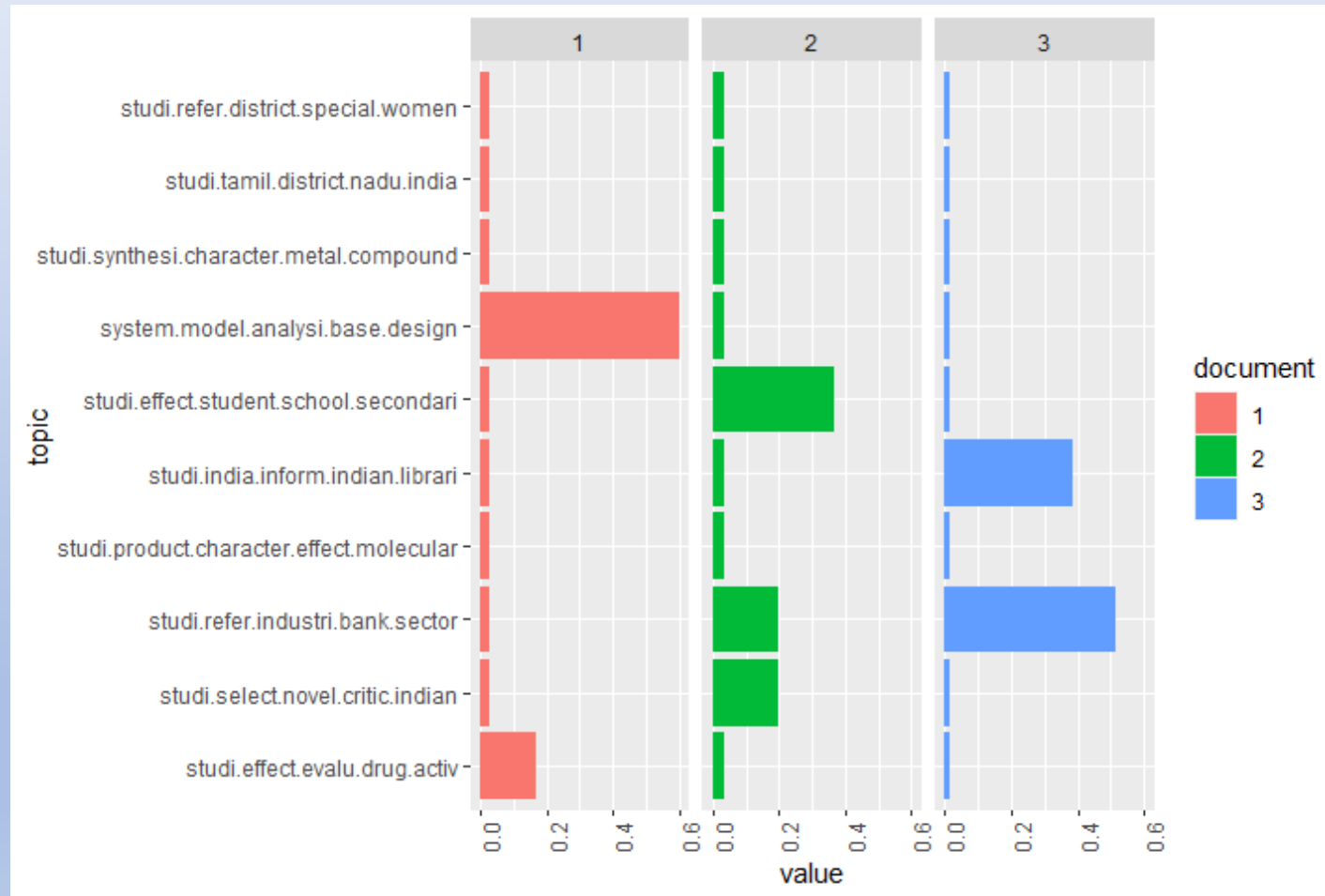
Number of topics



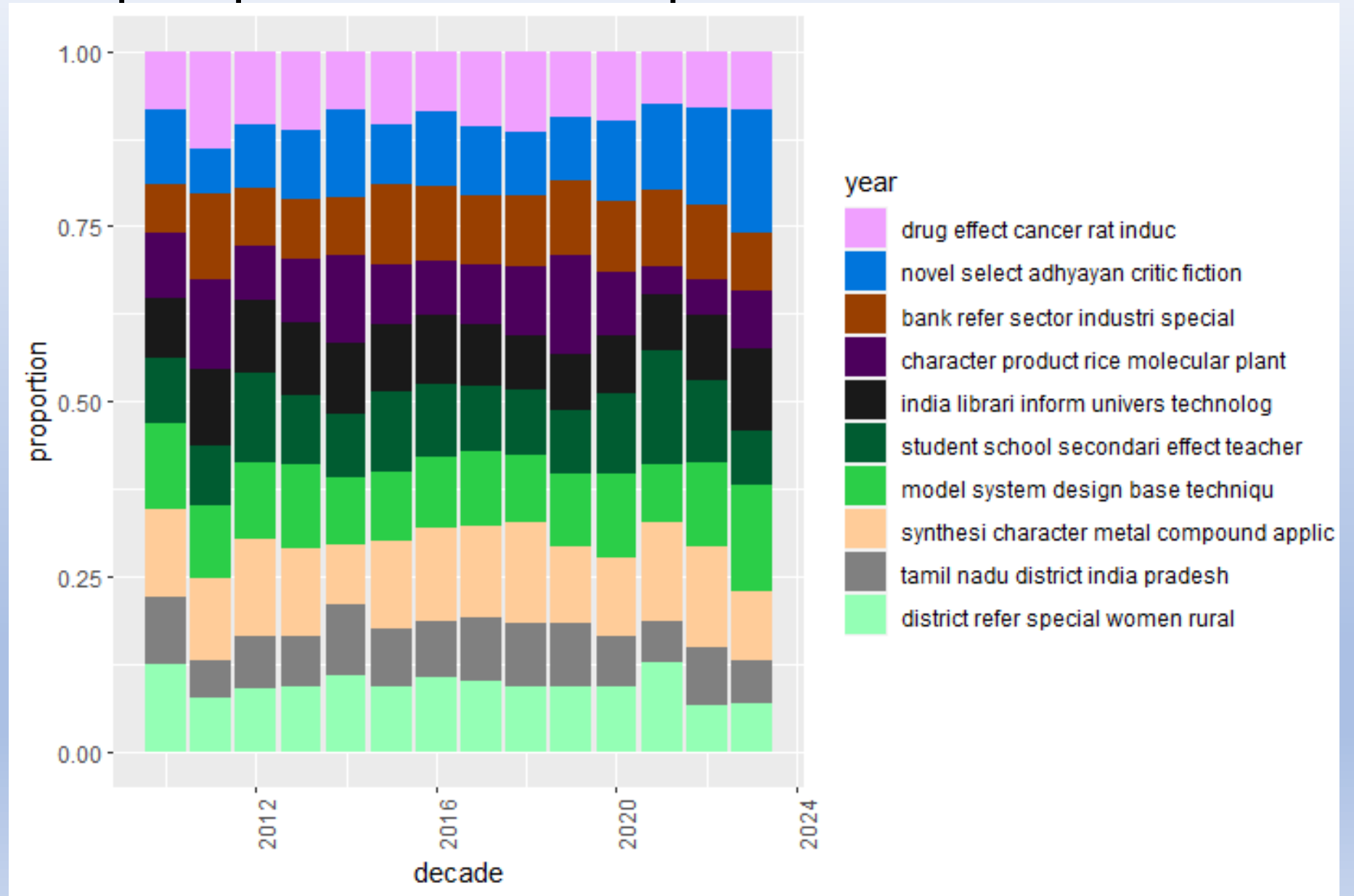
Topic Modelling of the documents



Topic modelling of the documents



Publication proportion of topics from 2010 to 2023



Discussions about the findings -

- Usage pattern and online research .
- Global and regional engagement.
- Digital transformation and updating trends
- Thematic evolution and topic modelling
- Research focus and emerging topics .
- Academic collaboration and plagiarism detection .
- Educational policy and digital literacy .
- Future research and technological integration .

Conclusion-

Limitation-heavy reliance on google trends , technological advancement in text mining beyond those utilized might impact accuracy of the study .

Conclusion-text mining by identifying significant topics this study aids researcher navigating the repository content efficiently and extracting meaningful insights . As the shodhganga grows it has potential to be the central repository for Indian research . Global collaboration and interdisciplinary research are the areas it sheds light on .